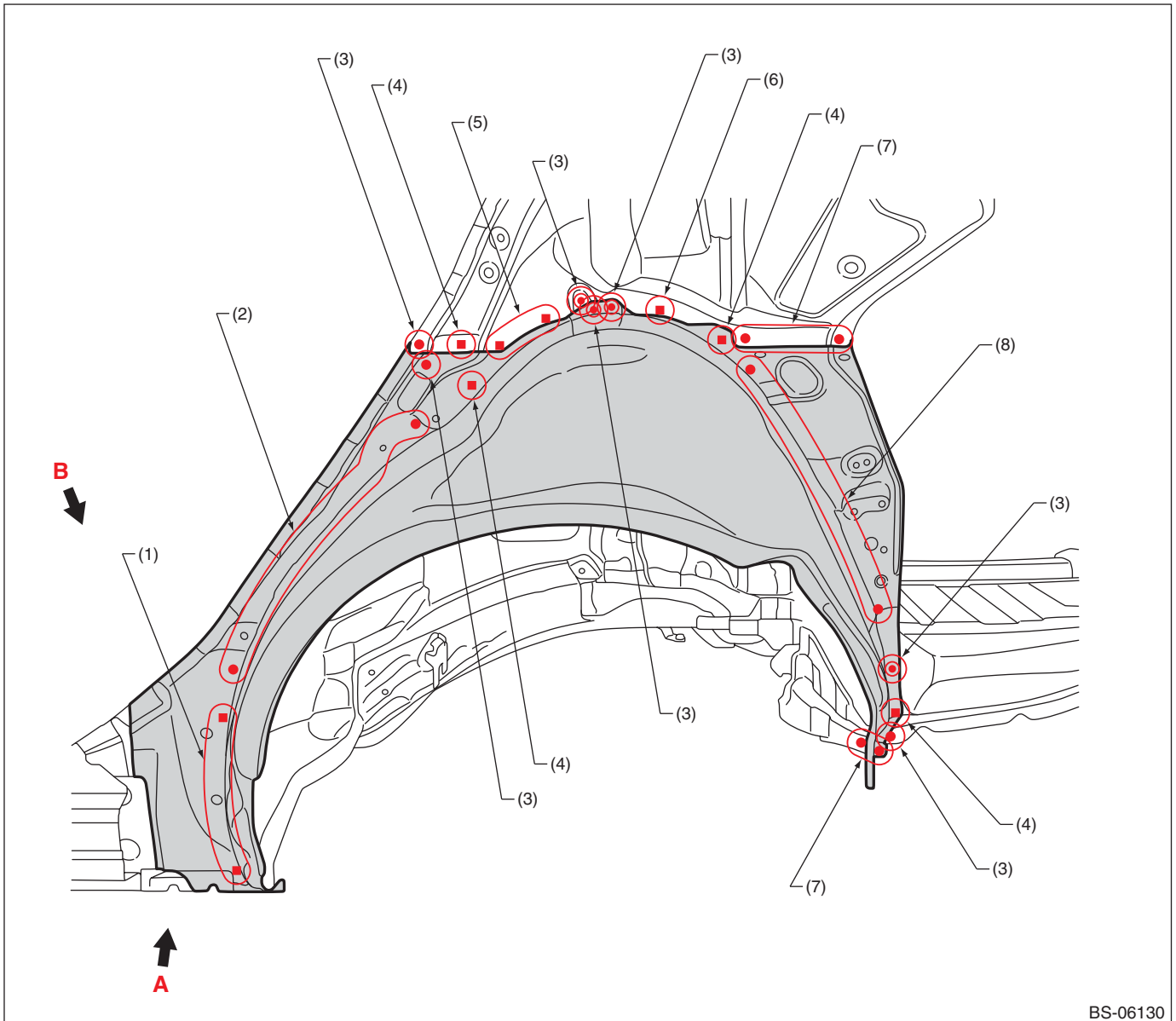


# Panel Replacement

## B: INSTALLATION

### • Overall view (LH)



BS-06130

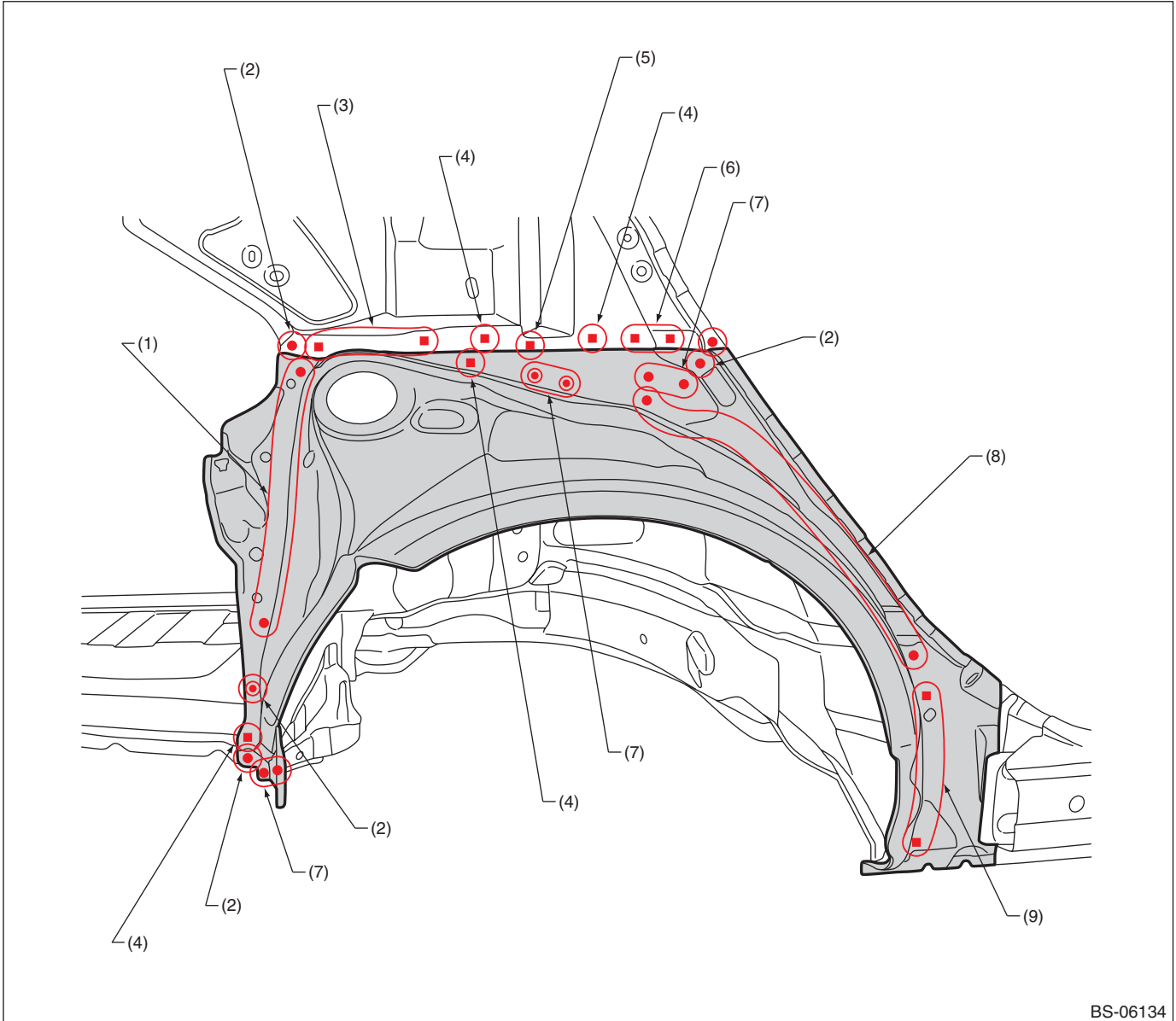
- (1) 4 points (service)
- (2) 8 points
- (3) 1 point

- (4) 1 point (service)
- (5) 2 points (service · matching)
- (6) 1 point (service · matching)

- (7) 3 points
- (8) 7 points

# Panel Replacement

• (RH)



BS-06134

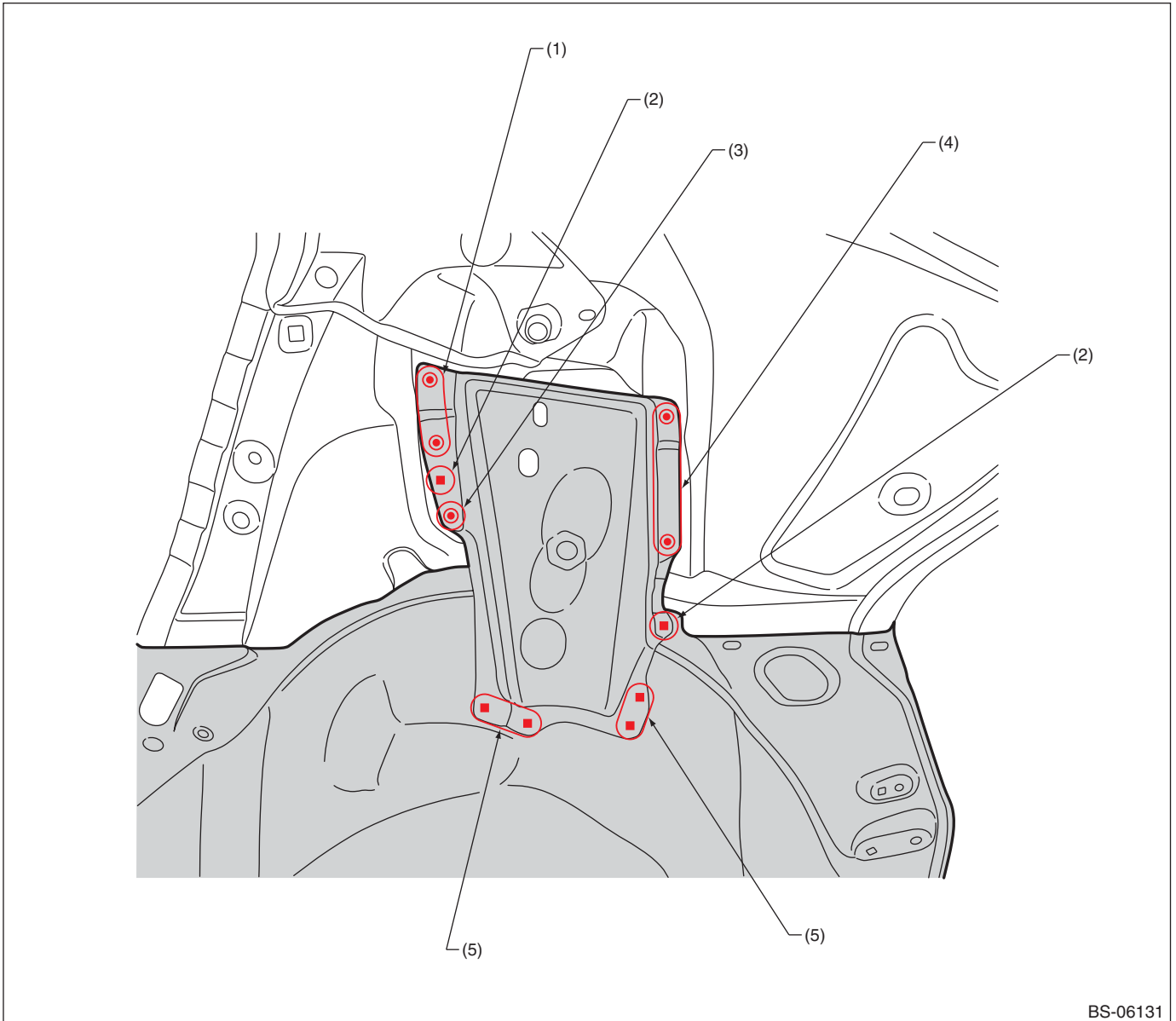
- (1) 6 points
- (2) 1 point
- (3) 3 points (service · matching)

- (4) 1 point (service)
- (5) 1 point (service · matching)
- (6) 2 points (service)

- (7) 2 points
- (8) 10 points
- (9) 4 points (service)

# Panel Replacement

• LH



BS-06131

(1) 2 points

(2) 1 point (service)

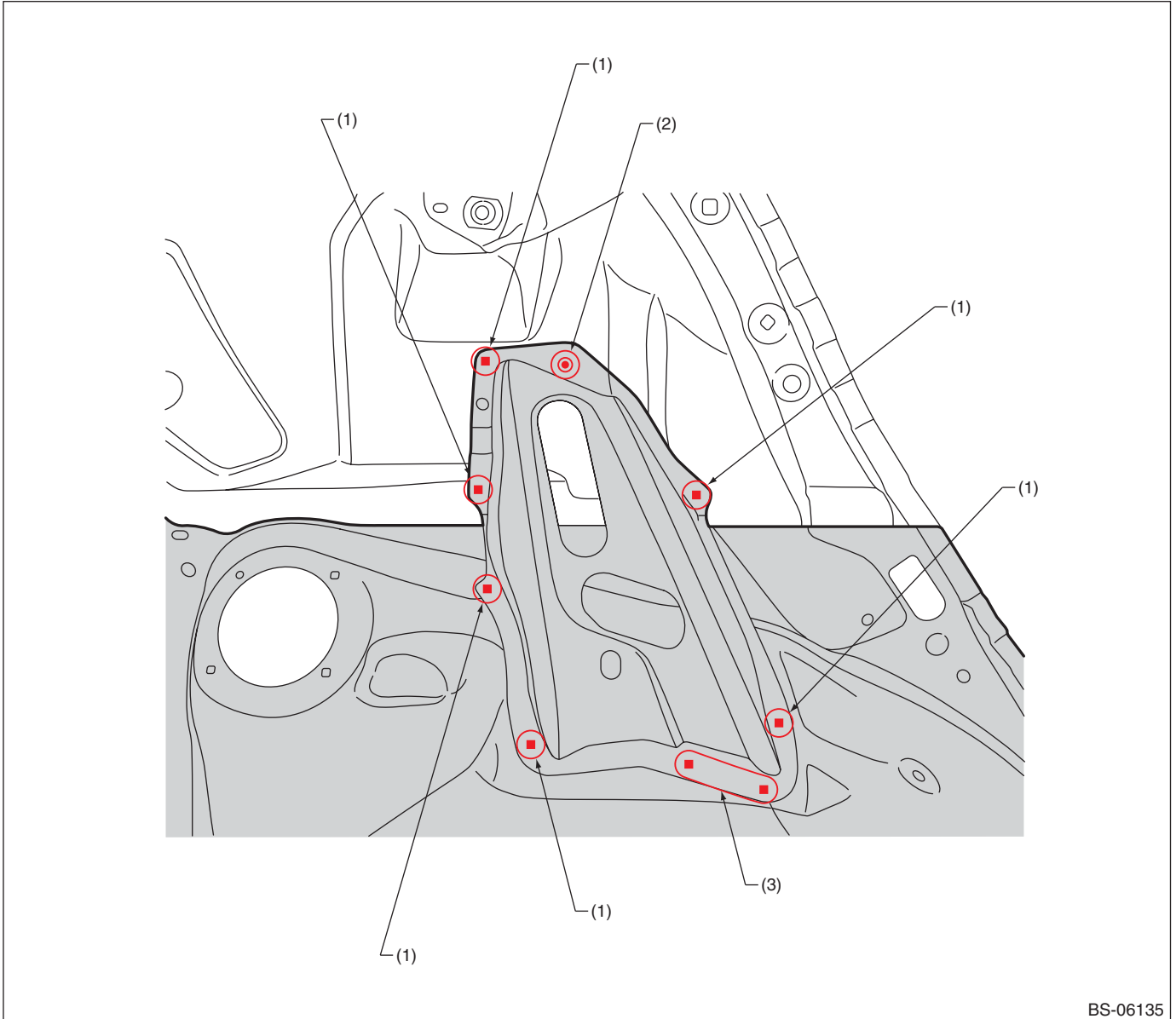
(3) 1 point

(4) 3 points

(5) 2 points (service)

# Panel Replacement

• RH

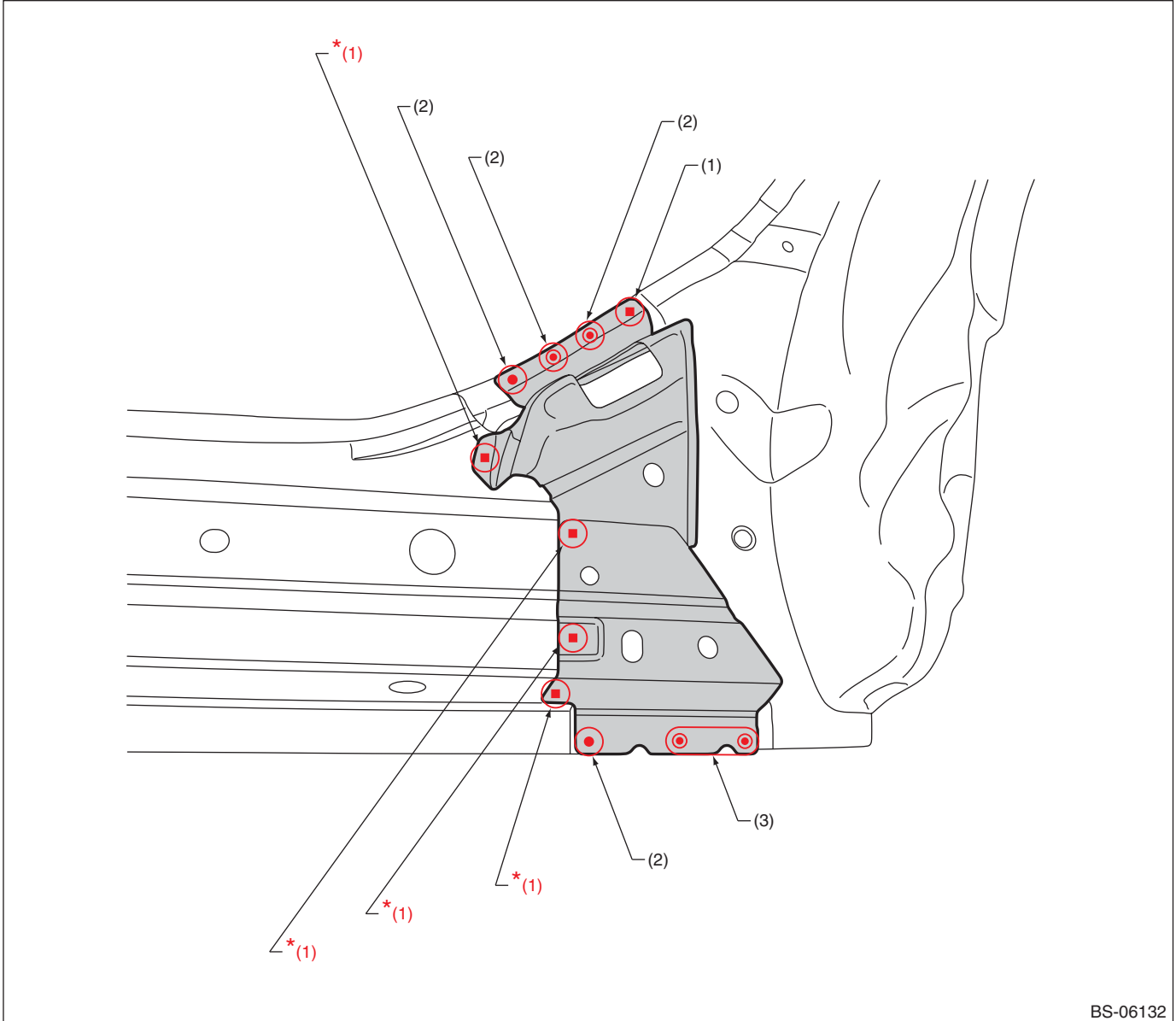


(1) 1 point (service)

(2) 1 point

(3) 2 points (service)

# Panel Replacement



BS-06132

(1) 1 point (service)

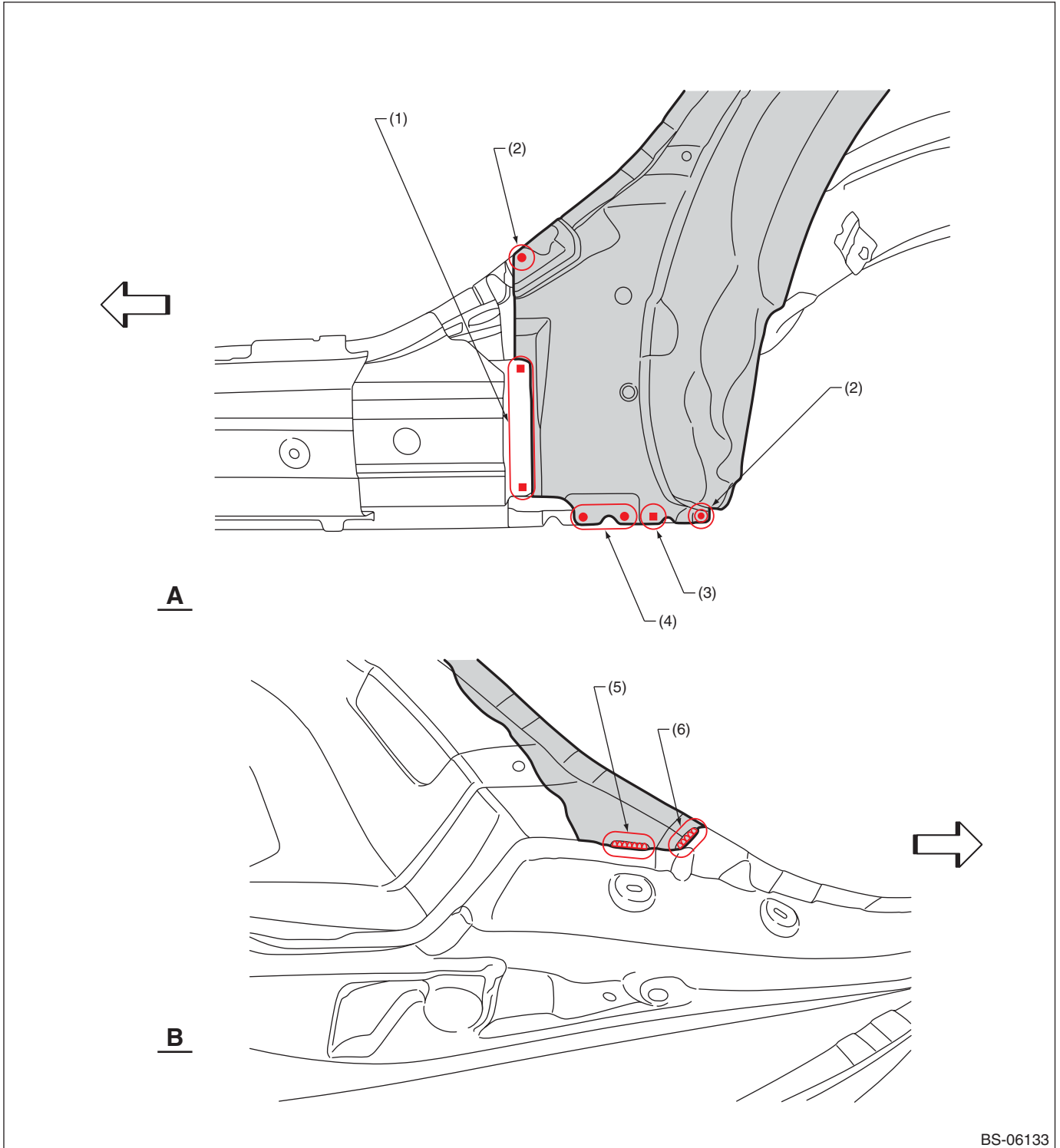
(2) 1 point

(3) 2 points

\*: When plug welding a high-tensile steel sheet of 980 MPa Class or more, refer to "NOTE, Foreword" on page 7.

# Panel Replacement

## • Views



BS-06133

(1) 3 points  
(2) 1 point

(3) 1 point (service)  
(4) 2 points

(5) 1 point [30 mm (1.18 in)]  
(6) 1 point [25 mm (0.98 in)]